

Who We Are: AbleLight College at CUWAA is a unique and exciting postsecondary education Certificate of Applied Learning designed to meet the higher education goals of people with intellectual and developmental disabilities. Through our traditional 2-year program or our new optional 3<sup>rd</sup> year fellowship (starting 23-24), we prepare students to become independent adults living and working purposeful lives in their selected communities.

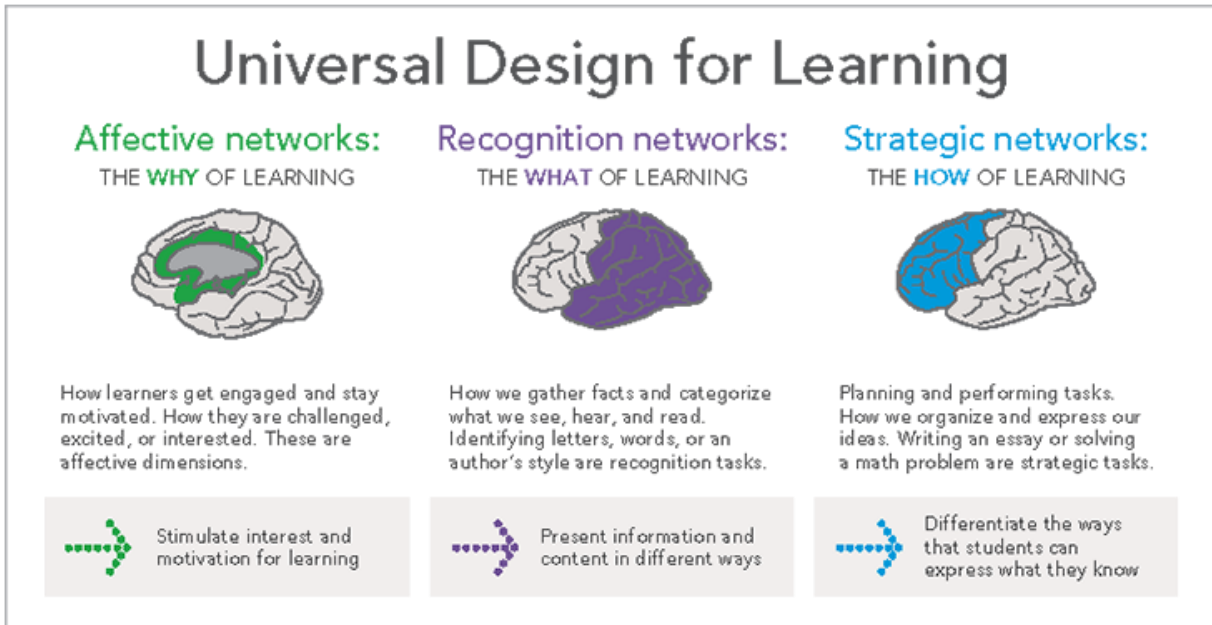
- We have two campuses----one located at **Concordia University Wisconsin** and the other **Concordia University Ann Arbor**
- All elements of the program (academics, employment experiences, campus & community life) are aligned with ***AbleLight Framework for Education (see below for description)***
- Students **live on campus in residence halls** and receive explicit and direct support with daily living skills as well as specific support with academics from CUW/AA undergraduate and/or graduate students acting in the role of Resident Aid with AbleLight 7 days a week.
- Students participate in a **series of "core" classes designed to meet their individual needs** in areas such as daily living skills, personal development and employment
- Students take **1-3 traditional undergraduate or continuing education courses each semester as an audit.**
  - Concentration areas for individuals to elect from (not required) **starting Fall 2023**. These align with the major department areas of the university and include:
    - Business and Information Technology
    - Arts & Sciences
    - Fine Arts & Music
    - Education and Human Services
    - Health & Wellness
- **Support for students in their elected traditional CUW/AA classes** are provided under the direction of AbleLight College professional staff and executed largely by Student Support Advisors (often undergraduate and/or graduate students from CUW/AA that are trained to provide specific classroom support which can include but are not limited to the following:
  - Snapshot profiles of student's strengths, interests and skills in academic and social/behavioral skills shared with Concordia faculty instructor along with ongoing support for implementation
  - Necessary accommodations provided by our team to the student
  - Pre-teaching of concepts
  - strategically designed study groups to support and enhance concepts taught in the classroom
  - support with organization and homework completion
- **iPads for All (starting Fall 2023)** All students in the college program will be provided with an iPad for the purpose of becoming acclimated and eventually proficient in utilizing specialized apps that will help them to be successful and more independent in their education, at their jobs, in their homes and the community. These instructional technology tools will be woven into all elements of their academic experience at the college.
- **Vocational/employment experiences** and instruction are vast including graduating levels of Career Exploration courses throughout the two years alongside vocational experiences tailored to each students' goals, interests and needs. There is no limit to the potential employment

experience one may have, and we ensure that the experiences are scaffolded and conducted in campus and community settings. Students plans are developed by the Career Preparation Coordinator and direct support is provided by job coaches along with building in natural supports of the business/organization

- **Inclusive Campus & community experiences** are both afforded, encouraged and individually supported to encourage expansion of social skills, recreation/leisure skills and general community engagement skills
- Using a **Person Centered Approach** to planning students and their team (professional staff advisor, family members and others of their choosing) **develop annual goals** in the key areas of transition with formal review meetings lead by each student on a bi-monthly basis and bi-weekly updates sent by advising staff focused on the specific short-term goals in each area supporting each annual goal
- **ALC 101 is a summer program** (June 21-23) offered for incoming freshman for the fall AND those who are considering for the future (someone who has another year of HS before moving onto college). This is held exclusively at the Wisconsin campus but is available to individuals interested/enrolled in either campus

## ***AbleLight College Framework for Education***

All parts of the AbleLight College programs, including the overall design, curriculum and environment/activities will be grounded [Universal Design for Learning \(UDL\) Framework](#). UDL is a framework for guiding instructional practices that provide flexibility in the way that students are engaged, the way information is presented and in the ways that they demonstrate their knowledge and understanding. The guidelines support having flexible design from the start with customizable options, which allows all learners to progress from where they are, and not where we imagine them to be. It is scientifically supported by over 40 years of brain research.



This structure informs approaches to the major transition goals and key outcome areas for individuals with disabilities including:

~Employment

~Post-Secondary Education & Training

~Independent Living

Which we rely on researched practices from the [National Technical Assistance Center on Transition \(NTACT\)](#) predictors and practices to promote and improve outcomes for our student. NTACT is the largest base of researched best practices for positive transition outcomes for individuals with disabilities.

And use the using the [21<sup>st</sup> Century Skills](#) to drive the instruction, activities and exposure in and outside of the classroom. 21<sup>st</sup> Century Skills are part of a growing international movement to focus on equipping ALL individuals as they transition past high school to prepare for success in whatever their chosen career path may be. The 12 skills are as follows:

- a. Critical Thinking
- b. Collaboration
- c. Communication

- d. Information, Media & Technology Literacy
  - e. Flexibility
  - f. Leadership
  - g. Imitative
  - h. Productivity
  - i. Social Skills
- These are tied to each student/participant's personalized plan

And all of this will be done through the lens of a [Person Centered Planning](#) approach for each individual at every stage of the process. Person Centered Planning is an ongoing process used to help people with disabilities plan for their future at all stages of life. It is an approach designed to allow the individual to take control over their life, with a strong recognition on their individual talents, desires and dreams that through a team effort, their plan for the future becomes a reality.